

**CENTURY 21.**

Thompson Realty  
Cayman Islands

**Maria Sanchez**

Sales Agent/Consultant

Office: (345) 949-2100

Office Fax: (345) 949-0610

maria@c21cayman.com

https://century21cayman.com

CENTURY 21 Thompson Realty Ltd., Grand Pavilion Commercial Centre, 802 West Bay Road, Grand Cayman, Cayman Islands KY1-1201

## LARGE HOUSE LOT IN EE

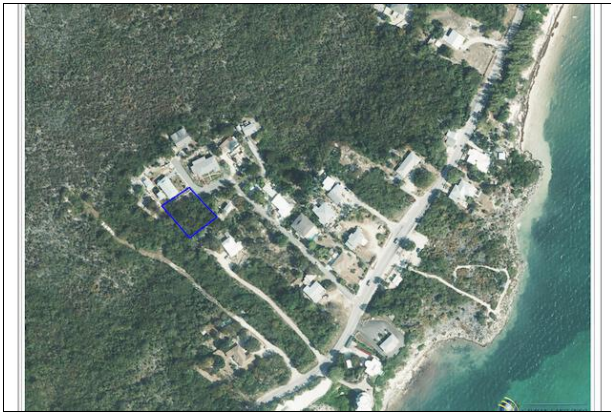
**CIREBA# 417229**

East End / High Rock (Grand Cayman) 📍 Cayman Islands

**MLS# 1154026**

Vacant Land

**135,000**



**CIREBA#:** 417229

**District/Area:** East End / High Rock (Grand Cayman)

**Region/Country:** Cayman Islands

**Available:** At Closing

**Prop.Type:** Vacant Land

**Prop.View:** Garden View

**Land Area:** 0.29 Acres

**Land Zoning:** Residential - Low Density

**Class:** Residential

### Features and Amenities

#### Outdoor Features

Trees

#### Water Supply

City Water

### Remarks

Nestled in the peaceful community of East End, this expansive house lot offers a unique opportunity to create your dream home in a tranquil and idyllic setting. Encompassing ample space, the property provides a canvas for designing a large and luxurious home surrounded by nature's beauty.

Additionally, the location offers convenient access to local restaurants, schools, Health City hospital, and other recreational facilities, making it an ideal setting for families or those seeking a peaceful retreat without sacrificing accessibility.

Photos sourced from Cayman Lands and Survey

### Directions

Across the EE police station, turn left on Gun Bluff Dr.